

Rowenta

E F F E C T I V E



D Bitte lesen Sie diese Gebrauchsanweisung und die Sicherheitshinweise aufmerksam durch.

Beachten Sie dabei die Abbildungen auf der ausklappbaren Bildseite.

GB Please read carefully the instructions for use and the Safety Points to Note. Pay particular attention to the fold-out page with the illustrations.

F Lire attentivement le mode d'emploi (et le conserver pour pouvoir le consulter).

Pendant la lecture, déplier la page avec les illustrations.

I Leggere attentamente le presenti istruzioni per l'uso e le norme di sicurezza.

Osservare la figura sui risvolli illustrati.

E Lea en su totalidad el modo de empleo, conservándolo para consultas posteriores.

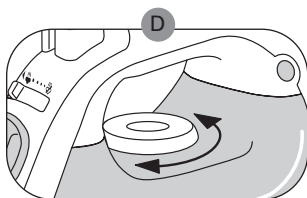
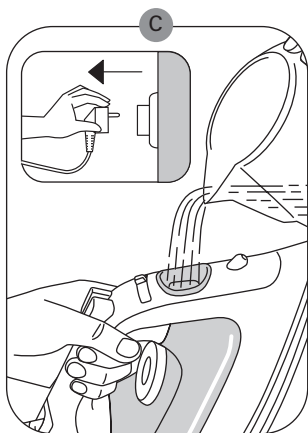
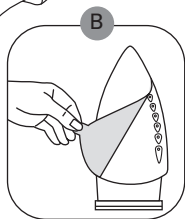
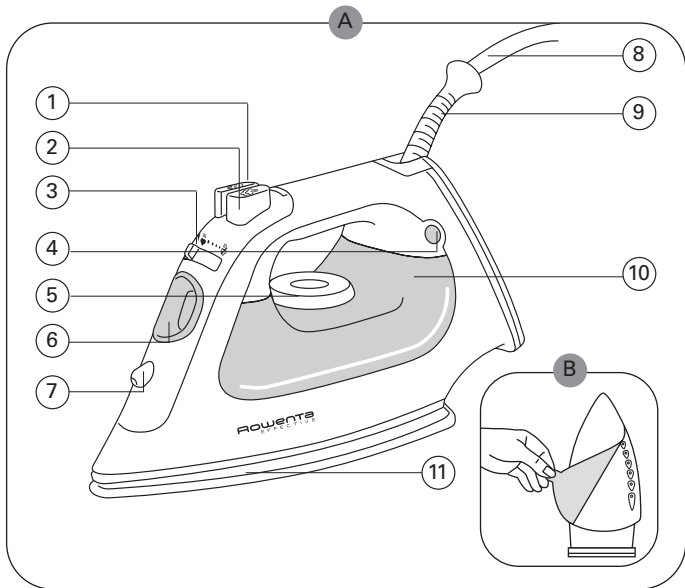
Para su lectura, abra por la página ilustrada.

P E favor ler com toda a atenção estas instruções de serviço, assim como as instruções de segurança. Sera conveniente consultarem se as figuras que se encontram nas página ilustrada desdobreveil.

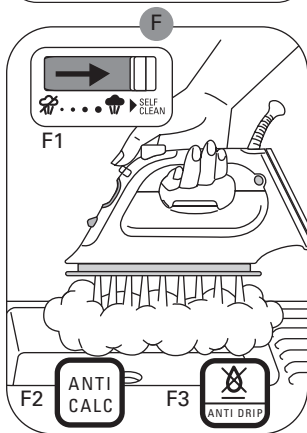
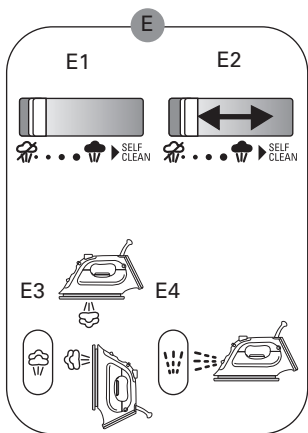
RF Пожалуйста, тщательно прочитайте эту инструкцию по эксплуатации и обратите особое внимание на правила техники безопасности. Во время чтения этой инструкции обратите внимание на рисунок, изображенный на внутренней стороне сложенной брошюры.



D	Denken Sie an den Schutz der Umwelt! Ihr Gerät enthält wertvolle, wiederverwertbare Rohstoffe. ➔ Bitte geben Sie Ihr Gerät zum Entsorgen nicht in den Hausmüll, sondern bringen Sie es zu einer speziellen Entsorgungsstelle für Elektrokleingeräte (Wertstoffhof).
GB	Environnement protection first! Your appliance contains valuable materials which can be recovered or recycled. ➔ Leave it at a collection point.
F	Participons à la protection de l'environnement! Votre appareil contient de nombreux matériaux valorisables ou recyclables. ➔ Confiez celui-ci dans un point de collecte ou à défaut dans un centre service agréé pour que son traitement soit effectué.
I	Partecipiamo alla protezione dell'ambiente! Il vostro apparecchio è composto da diversi materiali che possono essere riciclati. ➔ Lasciatelo in un punto di raccolta o presso un Centro Assistenza Autorizzato.
E	¡¡ Participe en la conservación del medio ambiente!! Su electrodoméstico contiene materiales recuperables y/o reciclables. ➔ Entréguelo al final de su vida útil, en un Centro de Recogida Específico o en uno de nuestros Servicios Oficiales Post Venta donde será tratado de forma adecuada.
P	Protecção do ambiente em primeiro lugar! O seu produto contém materiais que podem ser recuperados ou reciclados. ➔ Entregue-o num ponto de recolha para possibilitar o seu tratamento.



●	● ●	● ● ●
SYNTHETICS	SILK / WOOL	COTTON / LINEN
SYNTHETIK	SEIDE / WOLLE	BAUMW. /
SYNTHÉTIQUES	SOIE / LA INE	LEINEN
CHEMIEVEZELS	ZIJDE / WOL	COTON / LIN
FIBRAS QUIMICAS	SEDA / LANA	KATOEN / LINNEN
FIBRE SINTETICHE	SETE / LANA	ALGODÓN / LINO



English

Dear customer,
thank you for purchasing this appliance and for your confidence in us. Please read the operating instructions carefully and keep them in a safe place.

A

Appliance description

- | | |
|---|--|
| 1 Spray button | 7 Spray nozzle |
| 2 Power steam button | 8 Mains supply cord |
| 3 Variable steam control with Self Clean Function | 9 Flexible cord support |
| 4 Thermostat light | 10 Water tank with maximum water level indicator |
| 5 Temperature control dial | 11 Soleplate |
| 6 Filling inlet | 12 Integrated cord winding facility |

Safety instructions

- The appliance complies with EU directives 72/23/EEC and 89/336/EEC.
- The appliance may only be connected to alternating current as specified on the rating plate.
- An electrical appliance is not a toy. Use and store the appliance out of reach of children. Do not let the supply cord hang down.
- Do not leave the appliance unattended while it is connected to the mains supply.
- Electrical appliances generate high temperatures. Always use the handles provided and warn other users of the potential dangers (e.g. escaping steam or hot water, especially when ironing vertically).
- Never iron clothing which is being worn.
- Always disconnect the appliance:
 - before filling or emptying the water tank;
 - before leaving the room (even for a short time);
 - after use.
- Never unplug the appliance by tugging on the cord.
- Only use an extension lead or cord reel which is rated at 10A or greater and has an earth.
- Do not immerse the appliance in water.
- An electrical appliance should not be used if:
 - the appliance, the supply cord or the cord protector is damaged;
 - the appliance has been dropped;
 - the appliance is obviously leaking. In this case the appliance should be returned to an approved Rowenta Service Dealer for repair. (See enclosed list for addresses.)
- Repairs to electrical appliances may only be carried out by specialists. Improperly carried out repairs can cause serious danger to users. To avoid danger to users, a defective or damaged supply cord may only be replaced by an authorised Rowenta service centre.
- This product has been designed for domestic use only. Any commercial use, inappropriate use or failure to comply with the Instructions, the manufacturer accepts no responsibility and the guarantee will not apply.
- When the appliance has reached the end of its operational life it should be disposed of through the correct channels.

B Before use



BEFORE DOING ANYTHING ELSE, REMOVE THE SOLE-PLATE PROTECTOR AND DISCARD.

Before using the iron for the first time:

- Heat the appliance at the maximum setting without water (see D). A little smoke and a slight smell may be emitted, but this is only temporary. The water tank can then be filled directly with untreated tap water using a jug (see C).
- Each time you begin ironing, allow the iron to emit steam for at least 1 minute. During this time press the power steam button from time to time to release several bursts of steam. Any particles released through the soleplate during first use are harmless and are due to the newness of your iron

C Filling the water tank



Before filling the water tank, unplug from the mains and set the steam control to the  position.

Tilt the iron and pour in untreated tap water up to the maximum level (10).

What water may be used?

Your iron has been designed to operate using untreated tap water. However, if your water is very hard, you can mix it 50% untreated tap water with 50% distilled or demineralised water.






Do not add anything to the contents of the water tank and do not use water from clothes dryers, scented or softened water, water from refrigerators, batteries or air conditioners, pure distilled water or rain water. These contain organic waste or mineral elements that become concentrated when heated and cause spitting, brown staining or premature wear to your iron.



Tip: Spray starch onto the reverse side of the fabric to be ironed.

D Setting the temperature

Ironing label	Fabric	Temperature control
	Synthetic fibres e.g. viscose, polyester	●
	silk, wool	● ●
	cotton, linen	● ● ●

Using the temperature control (5), set the iron temperature to suit the type of material. We recommend using the above table as a guide. The thermostat light (4) indicates that the soleplate is heating up. When the light goes out, the required temperature has been reached.



Please note: When heating up the iron from cold, wait until the thermostat light has gone out a second time. Only then is the set temperature reached.

Tip: We recommend that you start with fabrics to be ironed at a low temperature as the iron takes longer to cool down than to heat up. For mixed fabrics set the temperature for the most delicate fabrics.

E Ironing and Steam functions

E1 Dry ironing

To iron without continuous steam, turn the steam control (3) to the ☁ position and set the temperature to suit the type of material (care points ●, ●● or ●●●).

E2 Steam ironing

You can steam iron by setting the temperature in the marked steam zone (after ●●). The steam quantity can be set to between ☁ (no steam position) and ☁ (maximum steam quantity). We recommend setting to maximum steam quantity only when the iron is set at temperature setting ●●●.

E3 Shot steam button (temperature setting after ●● in the steam zone)

To generate a powerful jet of steam to remove stubborn creases, press the power steam button.

Vertical steam ironing (temperature setting after ●● in the steam zone)

Ideal for removing creases from suits, jackets, skirts, hanging curtains etc.



Important:

Never steam or iron clothing that is being worn!

- Hang the garment on a hanger
- Set the thermostat control to maximum steam
- Hold the iron a few centimetres away from the garment to avoid burning delicate fabrics
- Press the power steam button repeatedly, moving the iron from top to bottom

The power steam and vertical steam functions (E3) are also possible to use if the steam control is set to the ☁ position. The interval between bursts of steam should be about 4 seconds.



Important: Never direct the steam at persons or animals! Do not touch delicate fabrics with the hot soleplate!

E4 Spray function

To dampen stubborn creases, press the spray button.

F Additional functions

F1 Self Clean – prolongs the life of the iron

The Self clean function flushes dirt and scale particles out of the steam chamber.

To operate:

- Fill the tank with untreated tap water up to the maximum mark and heat the iron to max. temperature.
- Unplug from the mains.
- Hold iron over a sink horizontally, push the steam control (3) past the ☁ position and into the Self Clean position and hold it there: steam will now begin to build up. After a few seconds water and steam will emerge from the soleplate, rinsing dirt and scale particles out of the steam chamber.

- After approx. 1 minute move the steam control slide to the ☞ position.
- Insert mains plug and allow the iron to heat up again.
- Wait until the remaining water has evaporated.
- Unplug from the mains and allow iron to fully cool down.
- When cool, the soleplate can be wiped with a damp cloth.

We recommend using the Self Clean function approx. Every 2 weeks. If the water is very hard, the iron should be cleaned weekly.

Self Clean Valve

The self clean valve prevents the drip hole into the steam chamber from furring or blocking up. To ensure the iron continues to function properly, open and close the valve by sliding the steam control to max then min a few times after use.

F2 **Anti-scale system** (depending on model)

Your iron contains an anti-scale cartridge to reduce scale deposits. This considerably prolongs the operational life of your iron. The anti-scale cartridge is an integral part of the water tank and does not need to be replaced.



Do not use descaling agents, as they will damage the lining of the steam chamber and so may impair the steam function.

F3 **Anti-Drip System** (depending on model)

If the temperature is set too low, the iron cannot produce steam because of the anti-drip technology which prevents droplets of water leaking from the soleplate.

G **After ironing**

- Unplug from the mains, pour away remaining water and set steam control to ☞. Then allow the appliance to cool down.
- Do not wind the cord round a hot soleplate.
- Use the integrated cord winding facility for storage.
- Store the iron standing on its heel.

H **Cleaning and maintenance**

When cool, the iron and the soleplate can be wiped with a damp cloth.


Do not use corrosive or abrasive cleaning agents or sharp objects to clean the soleplate. Depending on the model, if the soleplate is stainless steel it can be cleaned using a Rowenta Soleplate Cleaning Stick.



Important:

If the appliance has been standing unused for long periods, hold it horizontally and allow it to emit steam for 1 minute to clean the steam ducts and remove any residue from the iron.

1 Problems?

Problem	Possible cause	Solution
The soleplate does not heat up or the thermostat light does not come on.	No power supply.	Check that the mains plug is properly inserted or try plugging the iron into a different socket.
	The temperature control is on position "0" or set too low.	Turn the temperature control to the required setting.
Thermostat light goes on and off.	This is normal.	When the thermostat light goes on and off, the iron is heating up. As soon as the light goes off, the chosen temperature has been reached.
None or too little steam is being emitted.	The steam control is set on position  .	Turn the steam control to the required setting area.
	There is insufficient water in the tank.	Fill the tank (C).
	The Anti-Drip function is active (depending on model).	Wait for the soleplate to reach the correct temperature.
Brown streaks come through the holes in the soleplate and stain the fabric.	You are using chemical descaling agents.	Do not add any descaling agents to the water in the water tank.
	Pure distilled/demineralised or softened water is being used.	Only use untreated tap water or mix half tap water with half distilled/demineralised water.
	Your linen is not rinsed sufficiently or you have ironed a new garment before washing it.	Ensure linen is rinsed thoroughly to remove any soap deposits or chemicals on new garments which may be sucked up by the iron.
The soleplate is dirty or brown and can stain the linen.	You are using a too high temperature.	See the temperature table to correctly set the thermostat.
	You are using starch.	Clean the soleplate as indicated in section H. Always spray starch onto the reverse side of the fabric to be ironed.
Iron is leaking.	Over use of power steam button.	Allow more time between each burst.
The soleplate is scratched or damaged.	You have placed your iron flat on a metallic rest plate.	Always set the iron on its heel.
	You have ironed over a zip.	Try to avoid ironing over zips which may have rough edges.

If you are unable to trace the cause of the fault, contact an official Rowenta Customers Service Centre. The addresses are shown in the enclosed service centre address list.

Further hints and tips are obtainable from our homepage: www.rowenta.com